

# RATHINAM

---

## TECHNICAL CAMPUS

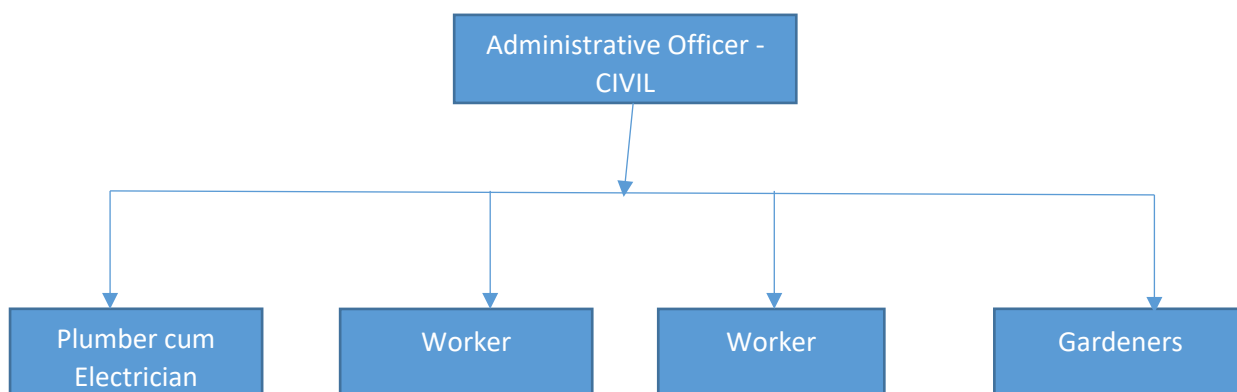
### Maintenance Policy

#### Maintenance and utilization of the Infrastructure Facilities:

The maintenance and preservation of the infrastructure facilities are carried out with the care of the heads of the individual infrastructure department. The following is the organizational chart of the departments.

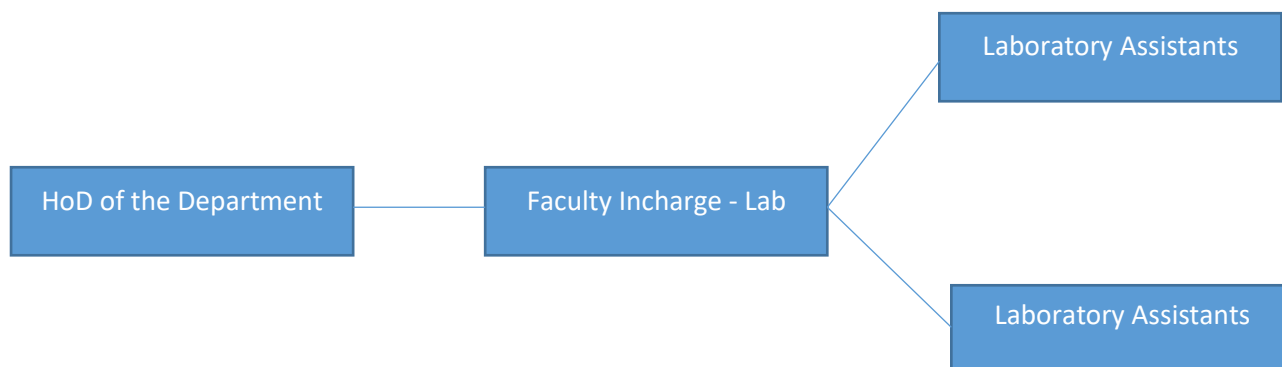
#### Civil Maintenance:

The civil maintenance is headed by the Administrative Officer - CIVIL. He is in charge of four divisions, water and sewage, building, carpentry and Gardening. Each division is headed by a supervisor and is employed by respective skill workers.



#### Laboratory Equipment:

The equipment and machineries in the laboratory/workshop are maintained by the lab In-charge(s)/workshop In-Charge(s) with the advice of HOD and faculty In charge of Labs.



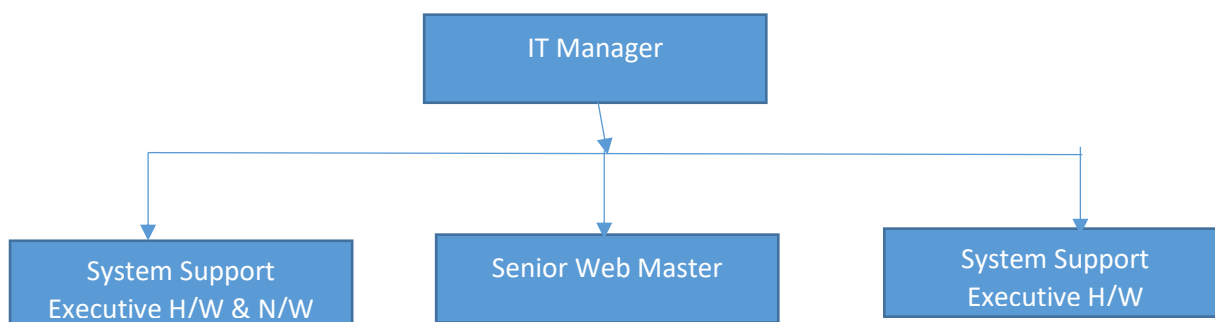
# RATHINAM

---

## TECHNICAL CAMPUS

### Computers, Software's& UPS:

The computers are maintained in the Institution by "IT Team". This division provides the integrated IT services like smooth running of automation, up-gradation and maintenance of automation package, college website, biometric services, troubleshooting of hardware, networking equipments including internet connectivity, procurement of hardware, software.



### Vehicles: Transport

There are forty three buses, two staff van, 4 cars & one Ambulance. The buses are plying covering all the routes for the use of staff and students.

